



MONTHLY NEWSLETTER

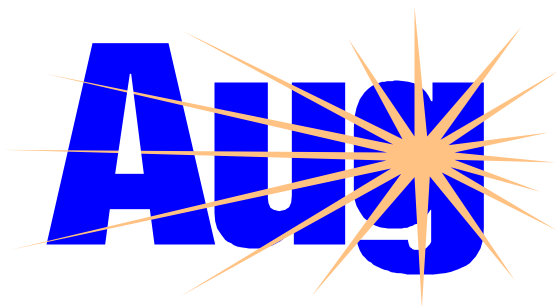
AUGUST 2012

Inside This Issue

- 1 Presidents Corner
- 2 Anchors
- 3 Fundraising Division
- 4 Projects Division



Local Pilots, Jill Tarter and Kim Knott along with former anchor member, Jordan Tarter, meet at Chilis to cheer on local Olympic swimmer, Claire Donahue.



Birthdays

Aug 10 Sylvia Sproul
Aug 20 Tess Barnfield
Aug 27 Heather Knott

Presidents Corner

Hello Pilots,

A new year begins. Thanks so much to the co-ordinators and division members who have met and completed their Plans of Work. This process should be completed shortly. Please watch your email and regular mail for copies to study and vote on. If you have any questions, please call me.

2012-2013 Officers

President: Pam Graves

President Elect: Lisa Harvey

Vice President: Allison Sousa

Secretary: Judy Fleming

Treasurer: Linda Nelson Cornett

Directors: Kim Knott, Linda Oakman and Gwen Osborne

Club Chaplain: Sue Beltz

Parliamentarian: Ed Fox

PIF Representative: Norma Idom

Pledge: Trovia Fuller

Publicity: Allison Sousa and Kim Knott

District Appointee Committee: Gwen Osborn, Lisa Harvey and Jill Tarter

Division Coordinators: Projects: Lisa Harvey, Anchors: Allison Sousa, Fundraising: Sue Beltz and Membership: Brenda Groat.

We just got word that PI agreed to a minimum of six meetings per year. We are excited about his change and glad we don't have to revert back to our old schedule. Remember our next meeting will be the third Tuesday in September. We will meet at the Visitors Bureau but will bring a pot luck dinner to enjoy. More on that later. Our other meeting dates will be Nov.20, Jan 15, Feb 19, April 16 and June 18th.

Thanks to all you wonderful volunteers who participated at Festival of Friends. I'm sorry I couldn't be there, but I wasn't worried because I knew you all would get the job done!

Until next time, *Pam Graves*

ANCHOR CLUB

Anchors (almost) Away!

We are looking forward to having an active Anchor Club again this year. Our Call-Out Picnic will be held in September. We are planning on adding goody bags to this year's event, so if you have anything you'd like to contribute or can round up any said "goodies" for our Anchors, we'd sure appreciate the help. Also, we are adding an application form and invoicing parents directly for dues this year, in the hopes that 1) fewer potential Anchors will fall through the cracks and 2) we can "touch" parents as a first step towards their own possible Pilot memberships!

In addition to continuing with the projects so near and dear to the Anchors' hearts, we hope to further engage the guidance counselors this year. Also, we plan to offer incentive gifts to recognize the Anchors with the most volunteer service hours each semester. We'll have lots more updates as school starts and the year progresses. Stay tuned...it's going to be exciting! *Allison Sousa*

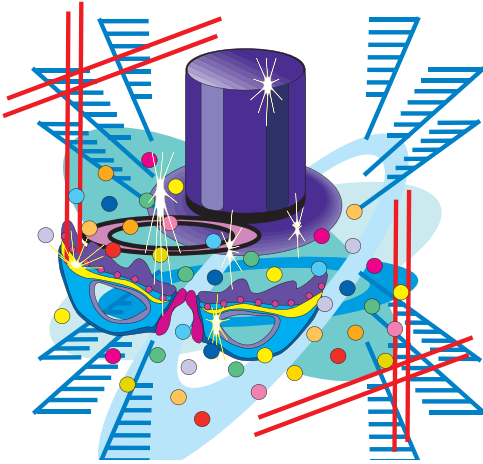




Fundraising Division



Mardi Gras Theme Set for March 2, 2013 Fashion Show

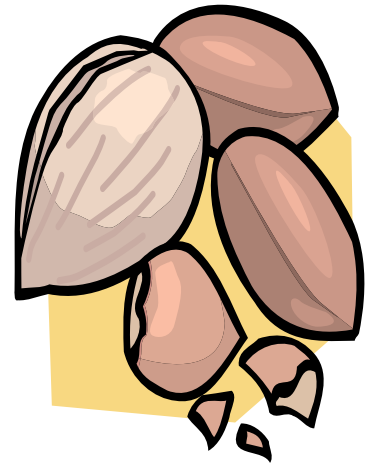


This years Fashion Show and Luncheon will have a French or Mardi Gras theme and menu. The venue will once again be St. Thomas church and Lily Pad will be doing the fashion show. Details on Menu and activities to follow at a later date.

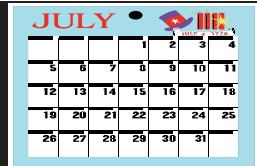
This year we are going back to only two fundraisers with the fashion show and nuts. But we are offering \$250, \$1,000 and \$2,500 sponsorships to area businesses to help us with our annual charity events. Please find the 2 page brochure on pages 5 and 6 that you can print out for potential sponsors to explain our events and what they get in return for sponsoring us. Please ask friends or businesses that you know and bring forms and money to our September meeting. *Sue Beltz*

2012-13 Pecan Sales

Ok, I am officially NUTS since I agreed to be the Nut Lady this year. I have talked to Schermer Pecans and they will not decide on prices this year until mid September but do not expect the dry weather to effect their crop. Right now we can get 16oz (1pound) halves for \$8.69 and pieces for \$8.54. They also offer 12oz bags for Halves \$6.79 and pieces \$6.59. We need to decide which to sell. To keep the 1 pound bags at current prices - if they do not go up - we will make \$1.31 per bag and \$1.46 per bag on the pecans. I am proposing we take advance orders like the Girl Scouts do for their cookies and order only that amount. Since we won't know prices until Sept, we can discuss this at our next meeting. We do not have to order until 2nd week of Oct, since the new crop cannot be shipped until end of October. Good news is the minimum order is only 1 case! *Jill Tarter*

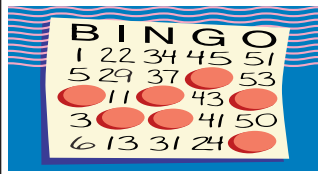


Mark Your Calendar!



Reading for Pre-School on Thursdays is at 9:00 am this year.

- Aug 7 Tuesday-** Bingo at Baptist Healthcare @ 6:30 pm (need 6 volunteers)
- Sept 4 Tuesday-** Bingo at Baptist Healthcare @ 6:30 pm (need 6 volunteers)
- Sept 18 Tuesday-** Monthly meeting 6:30 with Pot Luck dinner@ Loudon County Visitor's Center
- Nov. 20 Tuesday-** Monthly meeting 6:30 with @ Loudon County Visitor's Center
- Jan. 15 Tuesday-** Monthly meeting 6:30 with @ Loudon County Visitor's Center
- Feb. 19 Tuesday-** Monthly meeting 6:30 with @ Loudon County Visitor's Center
- April 16 Tuesday-** Monthly meeting 6:30 with @ Loudon County Visitor's Center
- June 18 Tuesday-** Monthly meeting 6:30 with @ Loudon County Visitor's Center



Projects Division



Pilots Serve Lunch at Festival of Friends



We teamed together with Patricia Neal Rehabilitation Center for a successful and fun day at the Lake for skiing, boating, music, and lunch provided for patients, past patients, and their families. Pilot provided lunch and also a pontoon boat for rides. This is always a special event for everyone involved. *Lisa Harvey*





PILOT CLUB OF LENOIR CITY

Est. May 31, 1955

Areas of Focus:

1. Brain-related diseases, disorders and disabilities.
2. Service projects unique to the Loudon County community.

PCLC partners with many organizations and agencies in the community to support existing programs that also support its mission.

Examples include: Project Lifesaver; East Tennessee Children's Hospital's Fantasy of Trees; Special Olympics; Loudon County Education Foundation Young Achievers Program; ChildFind; Brain Awareness Week; Forget Me Not 5k Benefitting the Pat Summit Foundation; Friends of the Library; Family Resource Centers and others.

PCLC also manages several of its own projects and programs, for which it seeks sponsors:

1. **BRAINMINDERS**—Pilot International's signature program features brain-health and safety tips for children, delivered using adorable puppets, playful skits and memorable songs. Pilot volunteers visit *every kindergarten classroom* in both the Loudon County and Lenoir City school districts annually.



2. **FESTIVAL OF FRIENDS**—A fun-filled day on the shores of Fort Loudoun Lake to promote disability awareness. Adaptive recreational equipment, boat rides, food, music and other activities are provided at no charge. Held annually in memory of the event's founder, organizer and a Patricia Neal patient, Randy Gaston and in partnership with Patricia Neal Rehabilitation Center and Lenoir City Parks and Recreation.



3. **ANCHOR CLUB**—The Lenoir City High School Anchor Club is PCLC's youth affiliate group. Anchors learn and develop the rewarding skills of service and leadership, and a keen awareness of opportunities to invest in the lives of those in their communities. Working in partnership with the Pilot mentors, these young people mature into dynamic leaders of tomorrow.



4. **FASHION SHOW & LUNCHEON**—With over 200 attendees each year, this is PCLC's signature event and one of its largest fundraisers. In addition to the fashion show and lunch, it features a silent auction, entertainment and lively décor surrounding a festive theme.



[www.PilotTNDistrict.com/Lenoir City](http://www.PilotTNDistrict.com/LenoirCity)

www.Facebook.com/PilotClubLC

Email: PilotClubLC@gmail.com

SPONSORSHIP LEVELS

“CAPTAIN” - \$1,000

(Exclusive/sole Presenting Sponsor, includes all 4 projects/programs on reverse)

- Prominently displayed company logo on all promotions and signage.
- Year-round banner ad on website, highlighted as presenting sponsor, with link to company’s website.
- Logo prominently featured in program (where relevant).
- Opportunity to deliver welcoming remarks (where relevant).
- Social media cross-promotion.
- 6’ table/display available at event venues (where relevant).
- One table (8 tickets) to Annual Fashion Show & Luncheon.

“FLEET” - \$500

(Four “Fleet” sponsorship opportunities available; includes all 4 projects/programs on reverse)

- Company logo on all promotions and signage.
- Banner ad on website for month prior to each project/program, with link to company’s website.
- Logo inclusion in program (where relevant).
- Social media cross-promotion.
- 6’ table/display available at event venues (where relevant).
- Four (4) tickets to Annual Fashion Show & Luncheon.

“LIFEJACKETS” - \$250

(Unlimited number of sponsors; one project/program of sponsor’s choice)

- Company logo on all promotions and signage.
- Company name included in Sponsor List on website, with link to company’s website.
- Acknowledgement in program (where relevant).
- Social media cross-promotion.
- Two (2) tickets to Annual Fashion Show & Luncheon.

Company Name _____

Address _____

Sponsorship Level _____

(If “Lifejackets,” specify project/program) _____

Contact Person _____

Phone _____ Email _____

Please make check payable to “PCLC” and mail to P.O. Box 1025, Lenoir City, TN 37771. A volunteer will follow-up with you upon receipt. Thank you for your support!